

## TECHNICAL DATA - HOLDON® CLIPS

Dimensions	(LxWxH in mm)	Weight (gram)	Max thickness of fabric (mm)
Holdon® MINI	40 x 35 x 10	12.5	1.5
Holdon® MIDI	70 x 40 x 18.5	20.0	5

### MATERIAL SPECIFICATION

Produced in Sweden – from glass-bre reinforced Nylon 6.

Holdon® in white contains UV stabilizers. Holdon® in colours other than white are protected from UV deterioration by pigment additives, causing UV blocking with the highest protection in black.

### STANDARD COLOURS AVAILABLE

Mini - white, green, blue, black, green.

Midi - white, black, blue.

*Special colours after request.*

### TEMPERATURE RANGE

Minus 30°C to +100°C. Melting temperature +220°C.

### MEDIAN LOADING CAPACITY

Holdon® MINI - 45 kgs

Holdon® MIDI - 70 kgs

### MEDIAN LOADING - EXPLANATION

Median loading capacity is determined by a series of separate static loadings applied to a single Holdon® installed on a 680/700 gms/sq.mtr. vinyl fabric (without hem). The median loading capacity represents the approximate safe working load that can be applied to the Holdon®, and in general terms determines the safe load bearing capacity of the bridge within the sleeve component.

**IMPORTANT** – the median loading capacity does not represent the efficiency or holding/gripping power or efficiency of the Holdon® - those elements of performance are determined by both the correct application of the Holdon® and by the physical characteristics of the fabric/substrate onto which the Holdon® is being applied.

### SAFETY

The manufacturers and/or its distributors/agents make no claim whatsoever as to the holding/gripping efficiency or suitability of the Holdon® clip and that the use of the product is the sole responsibility of the user(s).

18.10.2010

## Holdon® Systems

Ängelholmsv. 263, SE-269 42 Båstad

Phone +46 (0) 431 83190, Fax +46 (0) 431 83131

postbox@holdonsystems.com

www.holdonsystems.com

## INSTRUCTIONS - HOLDON® MIDI

**IMPORTANT** – In the interest of maximum safety and security, the Easyclip Midi is designed to have exceptional gripping power; Easyklips grip increases as the load applied increases. To ease the dismantling of the clip after heavy loading, please follow the instructions below.

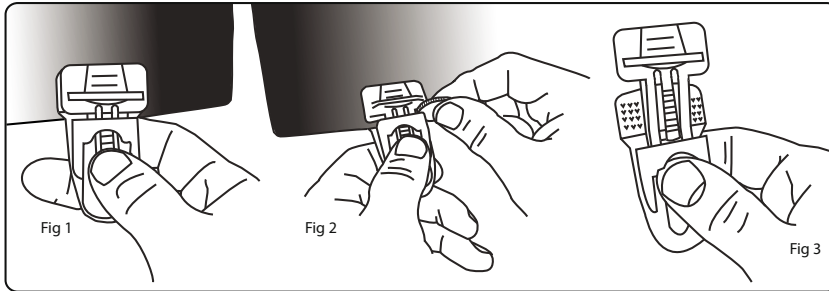
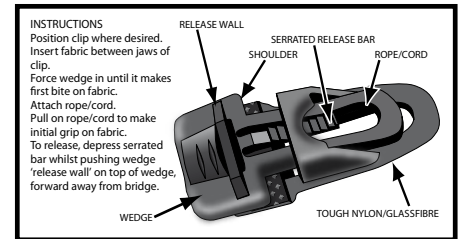


Fig 1 - Press thumb on centre release bar until you feel it flex (as illustrated) – this will unlock the wedge to enable it to move forward.

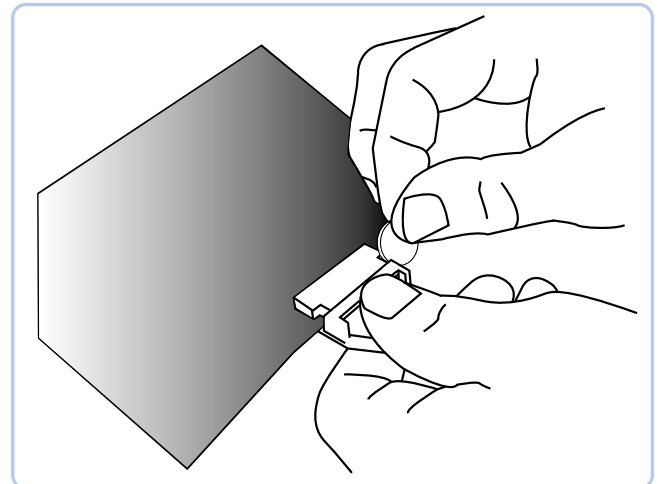
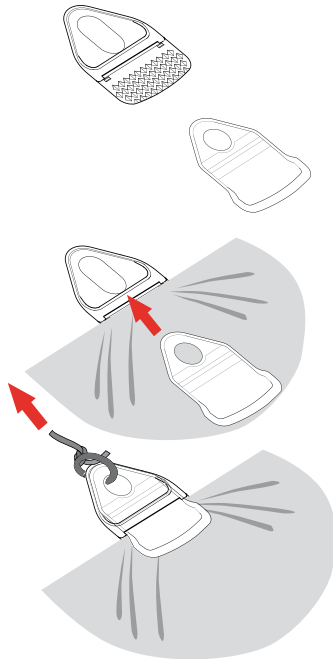
Fig 2 -Whilst still pressing the release bar, insert a coin between the bridge and the shoulder of the wedge as illustrated, and then twist the coin – this will lever the wedge forward to release the grip.

Fig 3 -Whilst still pressing the release bar, slide the wedge fully forwards as illustrated and remove from fabric.



## INSTRUCTIONS - HOLDON® MINI

**IMPORTANT** – In the interest of maximum safety and security, the Holdon® Mini clip is designed to have exceptional gripping power; Holdon® Mini clip grip increases as the load applied increases. To ease the dismantling of the clip after heavy loading, please follow the instructions below.



- 1) Grip the Holdon® Mini clip firmly, as illustrated
- 2) Insert coin between the bridge and the shoulder of the wedge
- 3) Twist the coin and at the same time use thumb to push the wedge forward - moving the wedge forwards releases the grip
- 4) The Holdon® Mini clip will now be loose and free to remove from the fabric
- 5) The clip can now be repositioned or reused

### Holdon® Systems

Ängelholmsv. 263, SE-269 42 Båstad  
 Phone +46 (0) 431 83190, Fax +46 (0) 431 83131  
 postbox@holdonsystems.com